



SCALETRON[®]

Commercial Scale Prevention

Specification Sheet

Chemical free scale prevention without the use of power or magnets

Fluid Dynamics provides an industry proven catalytic solution for scale prevention as an alternative to conventional ion exchange systems that have been used in the past. The commercial product Scaleton replaces a section of pipework and can be specified without the need to make provision for floor space or power.

The Scaleton consists of a non-sacrificial lead free catalytic core made from a special alloy housed within a non-reactive stainless steel (304) tube. The use of di-electric fittings is not necessary when specifying a Fluid Dynamics catalytic product.

Certified Lead-Free



Units of up to 3" diameter shown

Features:

- Chemical Free and Environmentally Friendly
- No Power Requirement
- No Waste Water
- No Maintenance
- Scientifically Confirmed Technology
- Uninterrupted Water Flow
- No Magnets
- Product Life Expectancy: 15+ Years

Installation:

The Scaleton can be easily installed to treat an entire system or to protect individual components within a system. There are numerous commercial applications from recirculating systems to single pass applications such as water delivery pipe lines to buildings.

Technology Backed by Science, Endorsed by Industry[™]

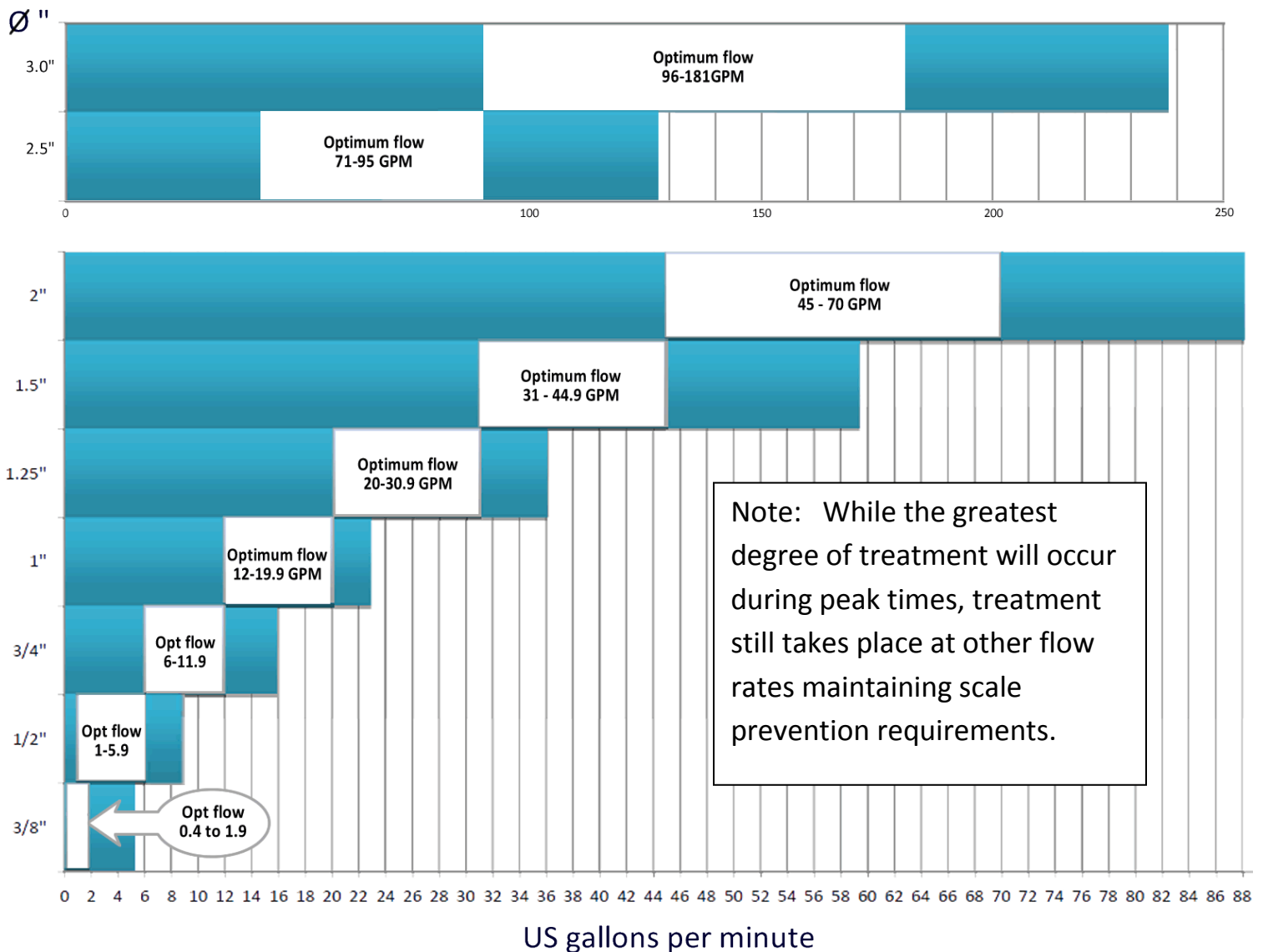
Selection Guidance:

Peak and average flow rates should be considered when selecting the correct Scaleton for a system. Once the flow has been determined the "Product Selection Guidance Chart" shown below will provide assistance in selecting the diameter suited to the application.

The goal is to determine and select the minimum diameter unit that can be used without incurring unacceptable pressure losses at peak demand periods.

For example: A hotel on city water is found to have peak consumption between 6 and 8 am in the morning. The minimum sized diameter unit capable of supplying the peak time flow without unacceptable pressure losses should be selected.

Diameter



* Actual maximum throughput (GPM) will vary according to system pressure.

Technology Backed by Science, Endorsed by Industry™

Installation:

The Scaleton can be easily installed to treat an entire system or to protect individual components within a system. There are numerous commercial applications from recirculating systems to single pass applications such as water delivery pipe lines to buildings.

Fitting Options:



NPT



Quick Fit



ASA 150 Flanges

Connection Sizes: 3/8" through 3" diameter

Flow Rates: 0.44GPM to 237.8GPM

SCALETRONS	Length	Diameter	Weight	NPT*
0038st	10"	3/8"	.44 LBS	3/8"
0050st	10"	1/2"	.75 LBS	1/2"
0075st	12"	3/4"	2.3 LBS	3/4"
0100st	12"	1"	3.3 LBS	1"
0125st	24"	1.25"	8.6 LBS	1.25"
0150st	24"	1.5"	10.1 LBS	1.5"
0200st	24"	2.0"	15.2 LBS	2"
0250st	30"	2.5"	TBD	2.5"
0300st	32"	3.0"	TBD	3.0"

*** Quick Fit fittings are also available as an option on sizes 1.25" diameter and above.**

*** ASA 150 Flanges are also available upon request**

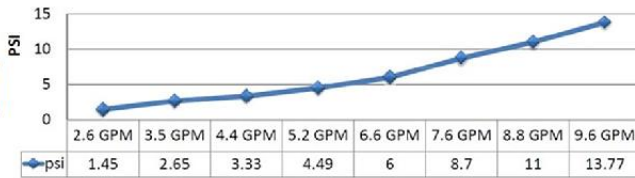
***Maximum temperature 250°F**

Disclaimer: Failure to consult with the company to obtain approval for installations on steam boilers and cooling towers (including evaporative condensers) will void the products warranty. No liability will be accepted for unauthorized installations on the aforementioned equipment.

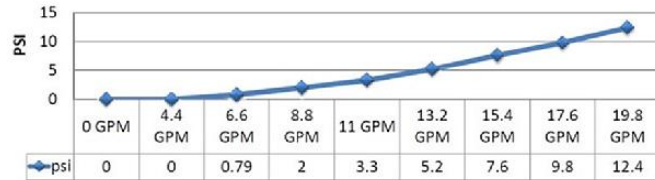
Pressure drop graphs follow...

Pressure Drop Graphs

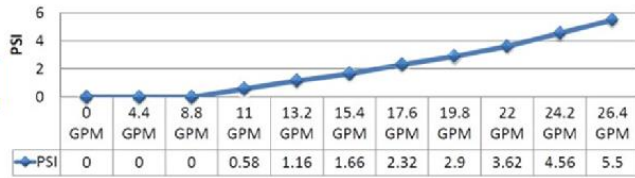
1/2"



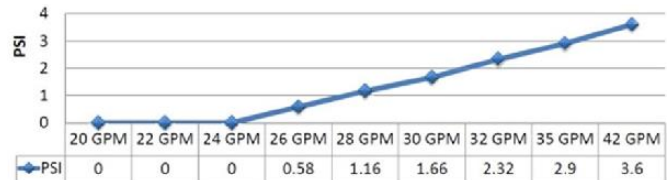
3/4"



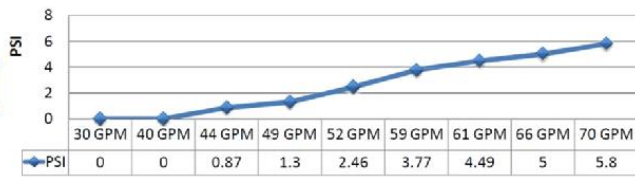
1"



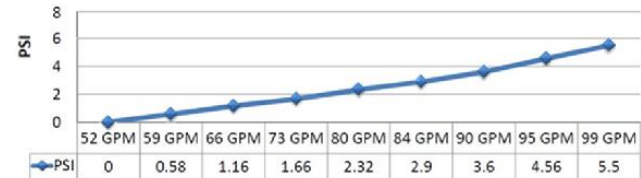
1-1/4"



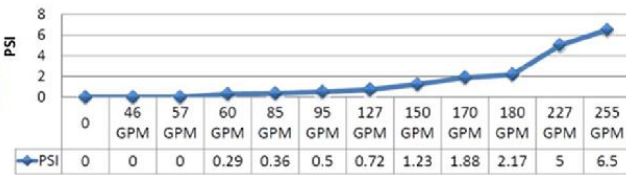
1-1/2"



2"



2-1/2"



3"

